



Internet TV: Cutting the cable

Theresa Cassiday

Catena Creations LLC

June 7, 2018

Ready to cut the cable?

Here's what you need to know.


The screenshot shows the USA Today website interface. At the top left is the USA TODAY logo. To the right is a 'SUBSCRIBE NOW' button with the text 'to get home delivery' below it. A navigation bar contains links for NEWS, SPORTS, LIFE, MONEY, TECH (highlighted in orange), TRAVEL, OPINION, a weather icon showing 80°, CROSSWORDS, VIDEO, SUBSCRIBE, and MORE. Below the navigation bar is a blue banner with the text 'Live stream: White House press briefing' and a 'Read Story' button. The main content area features the 'TALKING TECH' section header with a speech bubble icon, followed by links for BUZZ, VIDEO, PODCASTS, and NEWSLETTER. The article title is 'Cord cutters can now pick from 200 services, but mostly want the top four'. Below the title is a byline: 'Mike Snider, USA TODAY' and a publication date: 'Published 10:15 a.m. ET Nov. 9, 2017 | Updated 1:44 p.m. ET Nov. 10, 2017'. At the bottom are social media sharing icons for Facebook, Twitter, Email, and Messenger.

USA TODAY

[SUBSCRIBE NOW](#)
to get home delivery

NEWS SPORTS LIFE MONEY **TECH** TRAVEL OPINION 80° CROSSWORDS VIDEO SUBSCRIBE MORE

Live stream: White House press briefing [Read Story](#)

TALKING TECH  [BUZZ](#) [VIDEO](#) [PODCASTS](#) [NEWSLETTER](#)

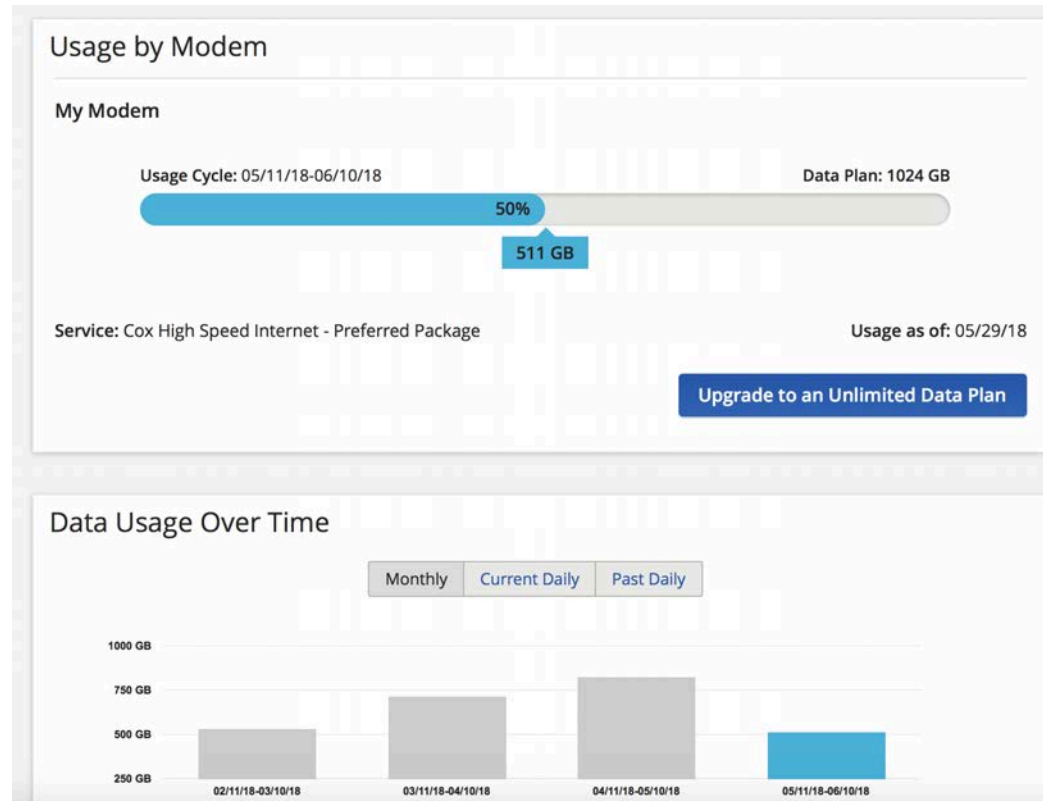
Cord cutters can now pick from 200 services, but mostly want the top four

[Mike Snider, USA TODAY](#) Published 10:15 a.m. ET Nov. 9, 2017 | Updated 1:44 p.m. ET Nov. 10, 2017

[f](#) [t](#) [e](#) [m](#)

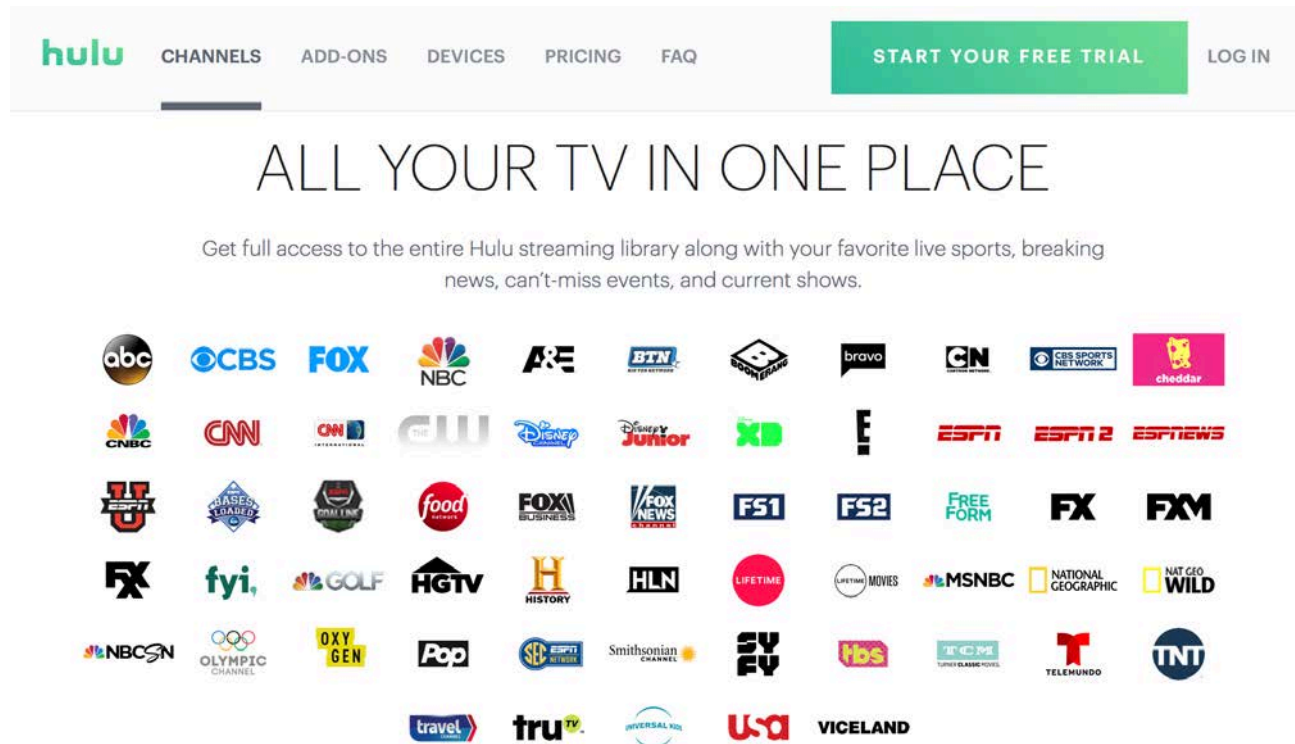
How's your Internet connection?

- Will need high speed Internet.
- How much data do you use each month?



Local channels

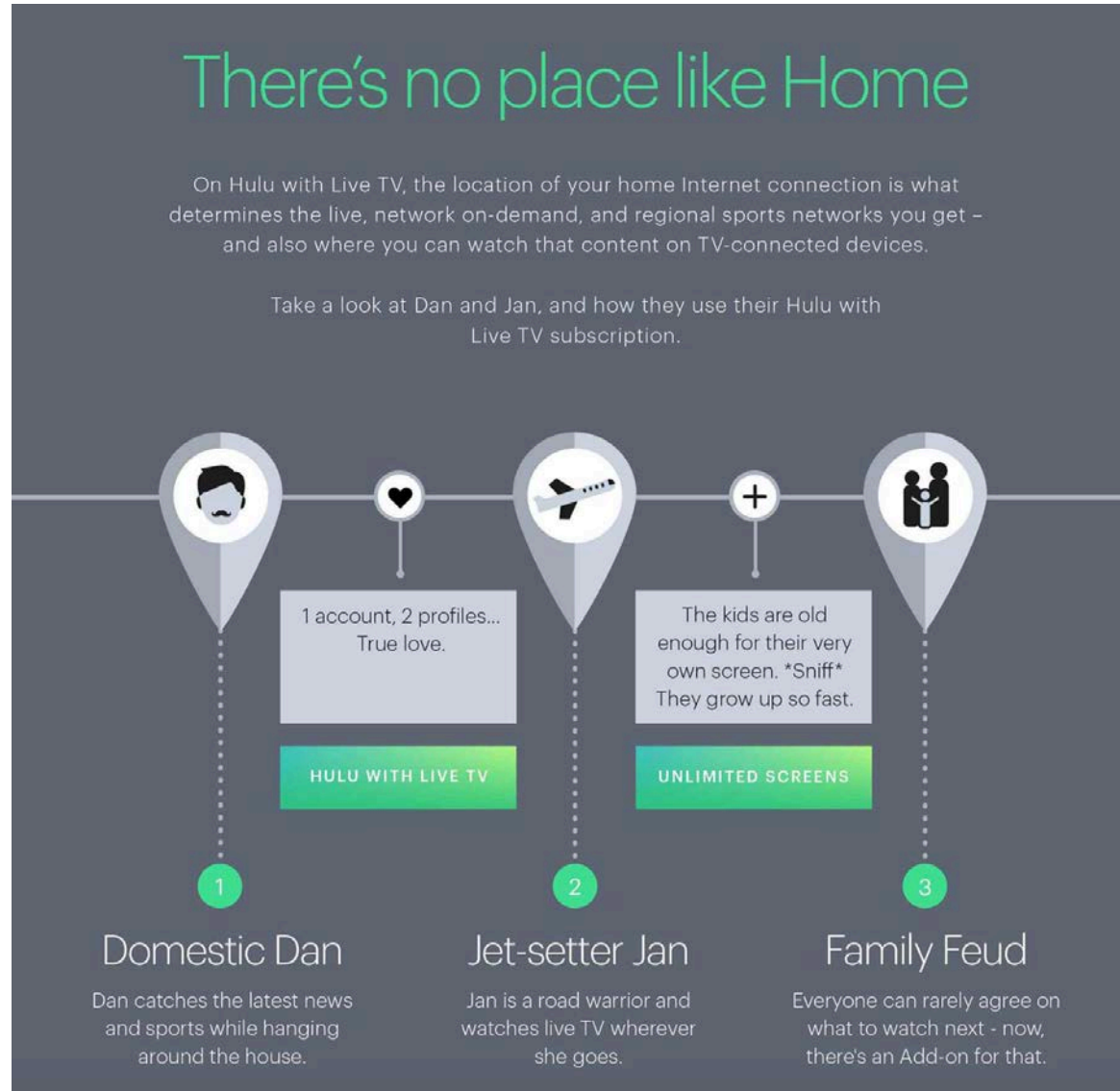
- Most streaming services don't include them.
- Need HD antenna. Get the good ones.



How many connections do you want? Need?

- Some allow 1-2 at a time; options for unlimited
- Where is your router?
- What needs to be near it? Printer, gaming device
- Can you run ethernet cables to TV locations?
- How's your Wifi?

How is "connection" defined?



What type of service?



What type of service?

- General TV streaming: Sling, Hulu TV
- Movies: Netflix, Amazon
- TV shows: Hulu
- Premium channels: HBO, Showtime
- Special packages: Sports, news, lifestyle
- Need DVR?

Big Ten Network

- Hulu \$40/month
- YouTube \$35/month
- Fubo \$35/month
- BTN Plus: \$80/year or \$10/month for your favorite school. Does NOT include football games.
- BTN2Go via cable login. Don't get all shows/games.



Pick a streaming device



Mac & PC
Hulu.com



Apple
iPhone & iPad



Android
Phones & tablets



Roku
Select models



Amazon
Fire TV & Fire TV Stick



Apple TV
4th generation



Chromecast



Xbox
Xbox One & Xbox 360



Pick a streaming device

- General device: Roku, Amazon Fire, Apple TV, Google Chromecast
- Gaming device: Xbox, Playstation Vue
- Computer devices: Apple/Windows PCs, phones, tablets
- Smart TVs: Samsung, LG

Pick a streaming device

Roku

[How it works](#)

[See what's on](#)

[Products ^](#)

[Support v](#)

[My account](#)



Roku TV™



Feature-packed smart TV. Hundreds of models from top brands.

Roku Express



5x more powerful HD streaming.

Roku Express+



Turn your older TV into a smart TV — works with HDMI® or composite.

Roku® Streaming Stick®



Powerful & portable.

Roku® Streaming Stick®+



Exceptional wireless performance. Brilliant picture quality.

Roku Ultra



Our ultimate player. Powerful quad-core & our best wireless performance.

Accessories



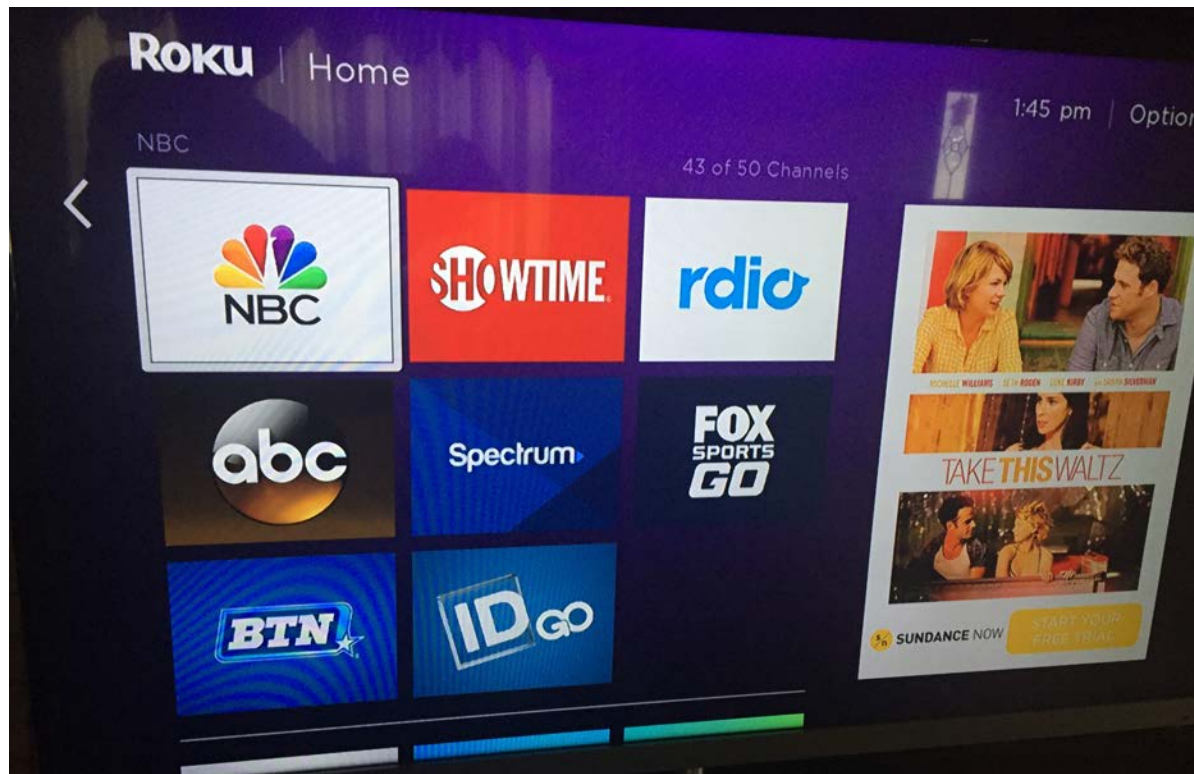
Pluses and minuses

- MUCH cheaper than cable.
- More flexible than cable.



Plusses and minuses

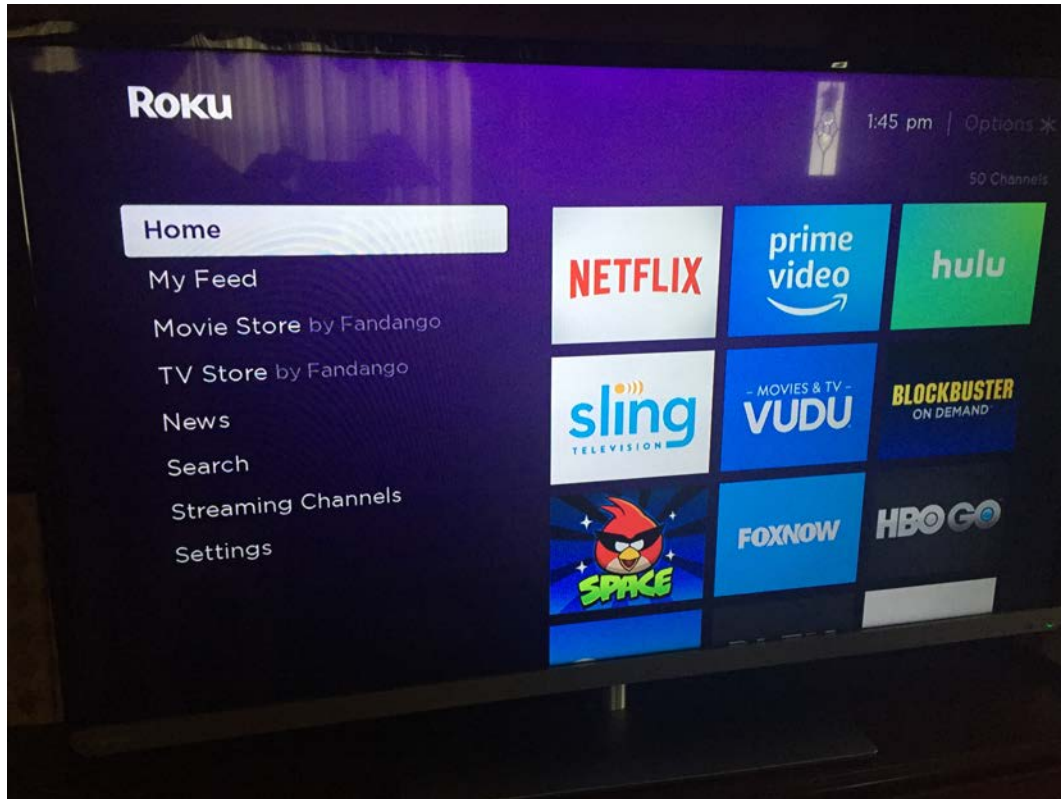
- Fit niche interests. Always adding channels.
- Channels on Roku: some free, some paid.
- Share accounts.



Plusses and minuses

- This is **Internet streaming**, not cable.
- Affected by:
 - Internet connection.
 - Number of viewers.
 - Servers.
 - Internet traffic.
- High-profile events can be affected by Internet traffic.

What I have



- Got Sling TV in July 2016.
- Basic Netflix.
- Added Hulu in January 2018.
Free with Sprint.

Startup costs

- Antennas for 2 TVs: \$45.
- Roku 3: \$50 when started Sling subscription.
(Second one was free.)
- Ethernet cable: \$18.
- Total: \$113

Startup costs

- Sling \$20/month x 12 months = \$240
- Netflix: \$8/month x 12 months = \$96
- Programming total: \$336
- Equipment \$113
- First year total: \$449
- Cox: \$1300+ per year.

2018 costs

- Sling Orange \$20/month x 7 months = \$140
- Sling Blue \$25/month x 5 months = \$125
- Netflix: \$9/month x 12 months = \$108
- Programming total: \$373
- Cox: \$1300+ per year.

2018 rankings

tom's guide

PRODUCT REVIEWS

DEALS

HOW TO

FORUM

WHAT TO WATCH

Q

LOGIN

PlayStation Vue

BEST OVERALL



8/10

REVIEW >

\$40 > Sony

STARTING PRICE (PER MONTH)

\$40 (\$30 in certain markets)

CHANNELS (IN ENTRY-LEVEL PACKAGE) More than 45

DVR Yes

ON-DEMAND Yes

DEVICE SUPPORT

Amazon Fire, Android, Apple TV, Chromecast, Chromecast-enabled TVs, Computers, iOS, PS3, PS4, Roku

SIMULTANEOUS STREAMS

5 (1 PS4, 1 PS3, 3 total iOS, Android and web)

Sling TV

BEST VALUE



8/10

REVIEW >

\$20.00 > Sling TV

STARTING PRICE (PER MONTH)

\$20

CHANNELS (IN ENTRY-LEVEL PACKAGE) 28

DVR \$5 extra

ON-DEMAND Yes

DEVICE SUPPORT

Amazon Fire, Android, Apple TV, Chromecast, Chromecast-enabled TVs, Computers, iOS, Roku

SIMULTANEOUS STREAMS

1 (\$20 per month); 3 (\$25 per month); 4 (\$40 per month)

Hulu with Live TV

BEST SELECTION OF CONTENT



7/10

REVIEW >

\$40 > Hulu

STARTING PRICE (PER MONTH)

\$40

CHANNELS (IN ENTRY-LEVEL PACKAGE) More than 50

DVR Yes

ON-DEMAND Yes

DEVICE SUPPORT

Android, Apple TV, Chromecast, iOS, Xbox One

SIMULTANEOUS STREAMS

2

— SHOW LESS

2018 rankings

tom's guide

PRODUCT REVIEWS

DEALS

HOW TO

FORUM

WHAT TO WATCH

Page 1: Ready to Say Goodbye to Cable?

YouTube TV
BEST DVR

You Tube TV

<

6/10 [REVIEW >](#) **\$35** >YouTube

STARTING PRICE (PER MONTH)	\$35
CHANNELS (IN ENTRY-LEVEL PACKAGE)	48
DVR	Yes
ON-DEMAND	Yes
DEVICE SUPPORT	Android, Chromecast & Chromecast-enabled TVs, Computers, iOS
SIMULTANEOUS STREAMS	3

DirectTV Now
NOT RECOMMENDED

DIRECTV NOW

4/10 [REVIEW >](#) **\$35** >DirecTV

STARTING PRICE (PER MONTH)	\$35
CHANNELS (IN ENTRY-LEVEL PACKAGE)	More than 60
DVR	In Beta
ON-DEMAND	Yes
DEVICE SUPPORT	Amazon Fire, Android, Apple TV, Chromecast, Chromecast-enabled TVs, Computers, iOS, Roku
SIMULTANEOUS STREAMS	2

Questions?